

## Inter-Screen Screen Cloths

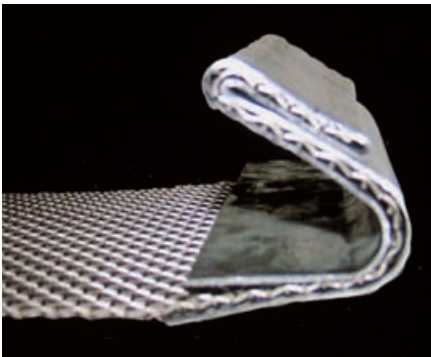
Inter-Screen supply a range of screen cloths for quarry, mining and industrial applications. When ordering screen cloths, the following information is needed.

1. **Length of screen cloth** – usually the same length as the side clamp bars
2. **Is a screen cloth overlap required?**  
Usually 25mm
3. **Width of screen cloth** – Usually expressed as OHAE (Overall hooked edges) and is determined by measuring between the screen machine side Plates and deducting a clearance (eg. 20mm each side for woven wire).
4. **Hook Type** – refer to pictures below

5. **Aperture** - Advise size and shape, Square or Slotted and slot direction.
6. **Wire diameter** - and / or Open Area required
7. **Material type** - High tensile wire, stainless steel, Rubber, Polyurethane or other.

We will be happy to assist in determining the specifications of your screen cloth requirements and any accessories to ensure you get the best performance from your screening application.

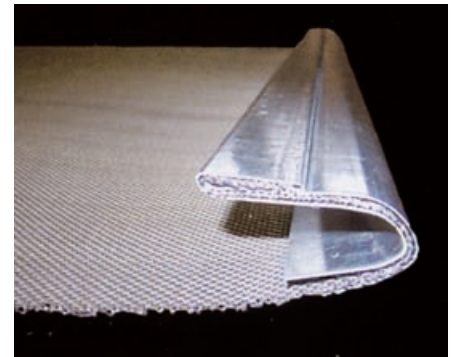
C Hook & Bands



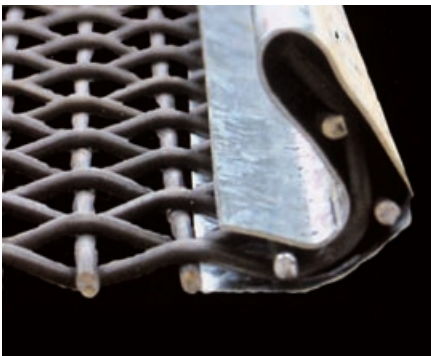
C Hook (Mo Bands)



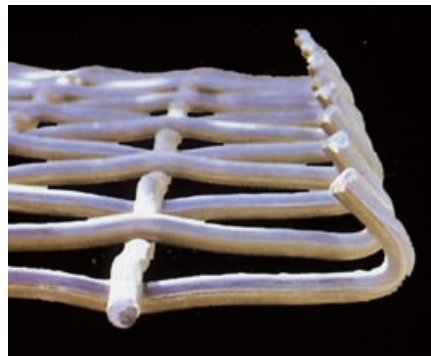
C Hook Double Fold



Standard V Hook & Bands



Standard V Hook only



V Hook Double Fold

